



# Beaufort County Public Works Stormwater Infrastructure Project Summary

**Project Summary:** Mint Farm Subdivision Pond

**Activity:** Drainage Improvement

**Narrative Description of Project:**

Project improved 234 L.F. of drainage system. Dewatered pond to safe elevation. Installed (3) catch basins, 234 L.F. of channel pipe, sod and hydroseeded for erosion control.

**Duration:** 1/24/17 - 2/21/17

2017-322 / Mint Farm Subdivision Pond	Labor Hours	Labor Cost	Equipment Cost	Material Cost	Contractor Cost	Indirect Labor	Total Cost
AUDIT / Audit Project	1.0	\$23.49	\$0.00	\$0.00	\$0.00	\$13.23	\$36.72
CBINS / Catch basin - installed	105.0	\$2,413.06	\$637.32	\$3,389.92	\$0.00	\$1,455.39	\$7,895.69
CBLI / Catch Basin Lid - Installed	25.0	\$586.95	\$64.63	\$107.37	\$0.00	\$350.10	\$1,109.05
CPI / Channel Pipe - Installation	190.0	\$4,371.50	\$910.42	\$3,891.39	\$0.00	\$2,497.10	\$11,670.41
DWP / Dewatered Pond	80.0	\$1,912.00	\$174.31	\$75.24	\$0.00	\$1,123.50	\$3,285.05
EQRENT / Equipment Rental	0.0	\$0.00	\$0.00	\$0.00	\$293.28	\$0.00	\$293.28
HAUL / Hauling	82.0	\$1,844.97	\$719.87	\$1,729.56	\$0.00	\$1,079.24	\$5,373.64
HYDR / Hydroseeding	30.0	\$663.60	\$90.84	\$133.34	\$0.00	\$401.10	\$1,288.88
LP / Locate Pipe	40.0	\$934.40	\$54.00	\$18.59	\$0.00	\$564.75	\$1,571.74
PL / Project Layout	22.0	\$548.46	\$19.80	\$4.55	\$0.00	\$329.01	\$901.82
SC / Sediment Control	52.0	\$1,260.90	\$46.80	\$87.86	\$0.00	\$717.78	\$2,113.34
SI / Sod - Installation	50.0	\$1,173.90	\$184.10	\$185.09	\$0.00	\$700.20	\$2,243.29
SPSWI / Special Project - SWI	4.0	\$89.12	\$17.36	\$6.94	\$0.00	\$57.36	\$170.78
STAGING / Staging Materials/Equipment	44.5	\$1,058.04	\$216.59	\$25.74	\$0.00	\$565.80	\$1,866.17
TT / Travel Time	2.0	\$52.66	\$7.20	\$3.96	\$0.00	\$37.02	\$100.84
UTLOC / Utility locates	1.0	\$24.70	\$0.00	\$0.00	\$0.00	\$13.23	\$37.93
<b>2017-322 / Mint Farm Subdivision Pond Sub Total</b>	<b>728.5</b>	<b>\$16,957.75</b>	<b>\$3,143.24</b>	<b>\$9,659.55</b>	<b>\$293.28</b>	<b>\$9,904.81</b>	<b>\$39,958.62</b>
<b>Grand Total</b>	<b>728.5</b>	<b>\$16,957.75</b>	<b>\$3,143.24</b>	<b>\$9,659.55</b>	<b>\$293.28</b>	<b>\$9,904.81</b>	<b>\$39,958.62</b>

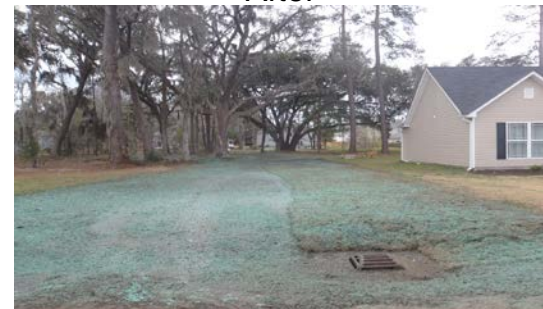
Before



During



After





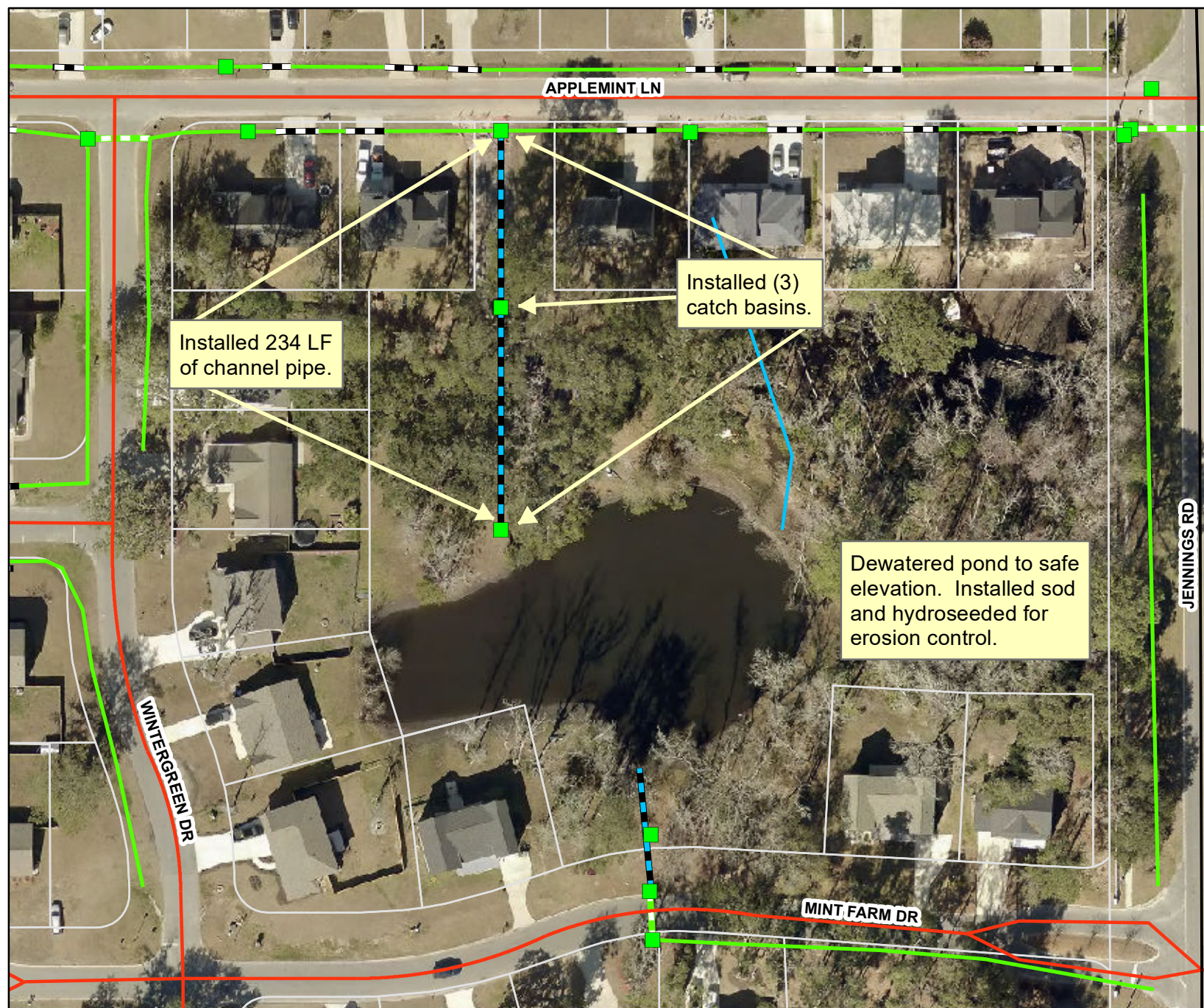
**Project: Mint Farm  
Subdivision Pond**

**Activity: Drainage  
Improvement**

**Project #:  
2017-322**

**Township/SW Dist:  
Port Royal Island/6**

**Completed:  
February 2017**



**Drainage Type**

- Access Pipe
- Bleeder Pipe
- Channel Pipe
- Channel
- Creek/Stream
- Crossline Pipe
- Driveway Pipe
- Lateral
- Lateral Pipe
- River
- Road Pipe
- Roadside
- Roadside Pipe

110 55 0 110 Feet

**1 inch = 83 feet**

Prepared By: BC Stormwater Management Utility

Date: Print 07/11/2017

File: C:\Project Summary Maps\Mint Farms S-D Pond 2017-322

